

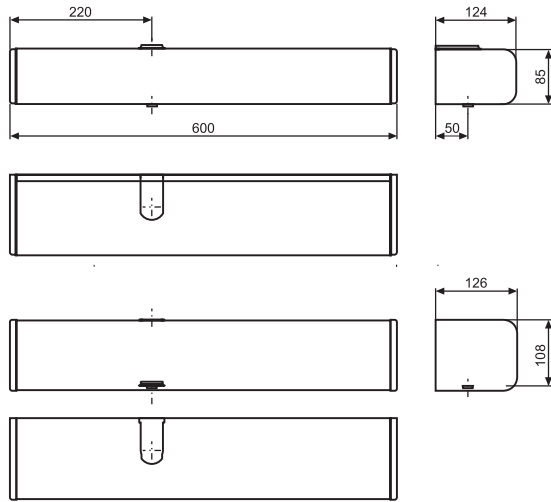


# Contents

Automatic drive systems for swing doors.....	03
HR50 - Uni - Door activation sensor.....	06
HR50 - Door activation sensor.....	08
BLS 60 - touchless switch.....	10
Finger Trap.....	12
Pure products - hygienic door furniture.....	13

# Automatic Drive Systems

## UK Distribution



Dimensions of the operator (H x W x L) 85 x 124 x 600mm or 110 x 126 x 600mm

Door closer size EN4 – EN6 for standard arm and slide arm

Electrical power supply 230VAC, 50/60 Hz

Opening time/closing time 3 – 20s / 5 – 20s Rated power 67W

Opening angle 70 – 115° (INVERSE up to 95°) Consumption in standby mode 13W

Operating modes with internal BDI operating switch Operating modes with BDE-D control panel with display (optional) In addition to the standard modes

Automatic operation Locked

Continuously open One-way traffic

Manual operation Operation lock

Functions Automatic reverse Options Electro-magnetic brake

Touch control (push and go) Integrated mechanical sequential control SFR 127

Emergency stop, interlock control or 2-leaf doors Special control option: «barrier-free WC access»

Customer-specific door parameters Hold-open system for fire and smoke protection doors



### Lintel installation (1-leaf door)

Standard cars, DIN left or right, pushing; drive variant for pushing sliding bars available



### Lintel installation (1-leaf door)

Slide arm DIN left or right pulling



### Lintel installation (2-leaf door, master/slave operation)

Two electrically coupled drives with standard arm pushing or slide arm pushing



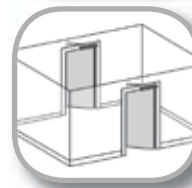
### Lintel installation (2-leaf door with two-way traffic)

Alternating operation of two drives that are independent of each other



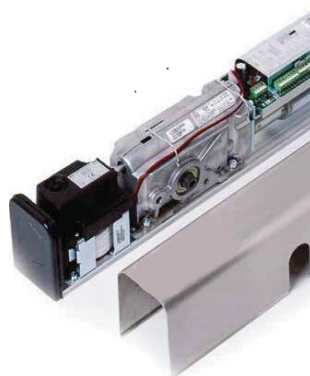
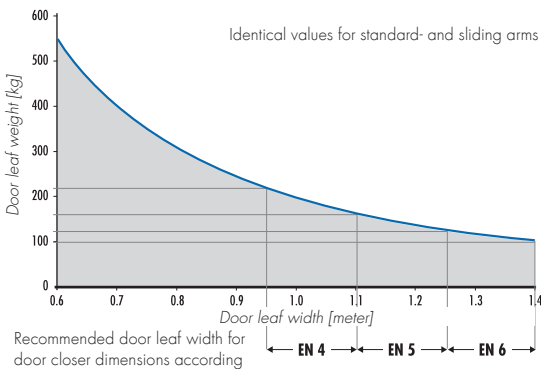
### Door leaf installation (1-leaf door)

Arm and possible combinations such as lintel installations



### Lintel installation (2 x 1-leaf doors standing one after the other)

Two electronically interconnected drives in all arm variants



# Accessories and Options

## Arm types

The power transmission from the drive to the door works by means of a bar, which, depending on the mounting situation is available as a standard or sliding arm. Standard arms are available in different lengths to compensate for a range of lintel sizes.

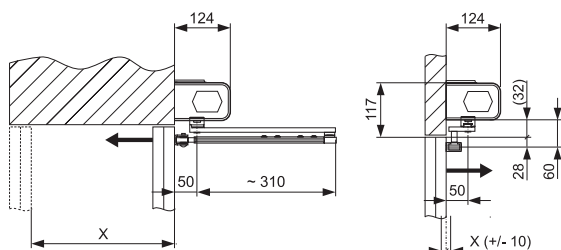
Through the use of optional axle extension pieces, so-called spacer bushes, different lintel heights can be compensated for.



Standard arms, pushing

Sliding arms, pulling or pushing

## Lintel depths



Type Standard arm SG1 – SG3

Slide arm GG

Lintel depths  $X = 0 - 330 \text{ mm}$

$X = 0 + / - 10 \text{ mm}$

## Axis extensions

For standard or slide arm



Type Standard arm pushing

Slide arm pulling

20 – 80 42.5 – 102.5 mm

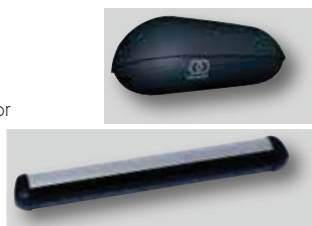
32.0 – 92.0 mm

## Sensor systems

RAD 290 radar motion detector

Infrared presence detector

Security sensors for the monitoring of the door swivel area



## Product range



FULL POWER

LOW ENERGY

INVERSE

FIRE

(conforms to DIN 18650)

FULL POWER + LOW ENERGY + FIRE

Currentless drive units function like a mechanical door closer

INVERSE

Currentless drive unit opens using spring tension

## Arm systems and accessories

Standard arm: pushing, different lengths

Slide arm pulling and pushing with integrated stop

Axis extensions

## Operator casing

Standard (stainless steel 85 mm) and in aluminium 85 mm or 108 mm

Extended (slaves required)

Extended for double swing doors

## Treated surfaces

Satin stainless steel or coloured aluminium or anodised



## Spring tension

Adjustable spring pretensioning (EN4 – EN6)

## Installation versions

- Lintel installation on hinge side or opposite hinge side
- Door panel assembly
- Hold-open systems for fire protection barriers
- Master/ slave operation applied as fire proof doors require also a mechanical sequential control SFR 127





### Trigger devices



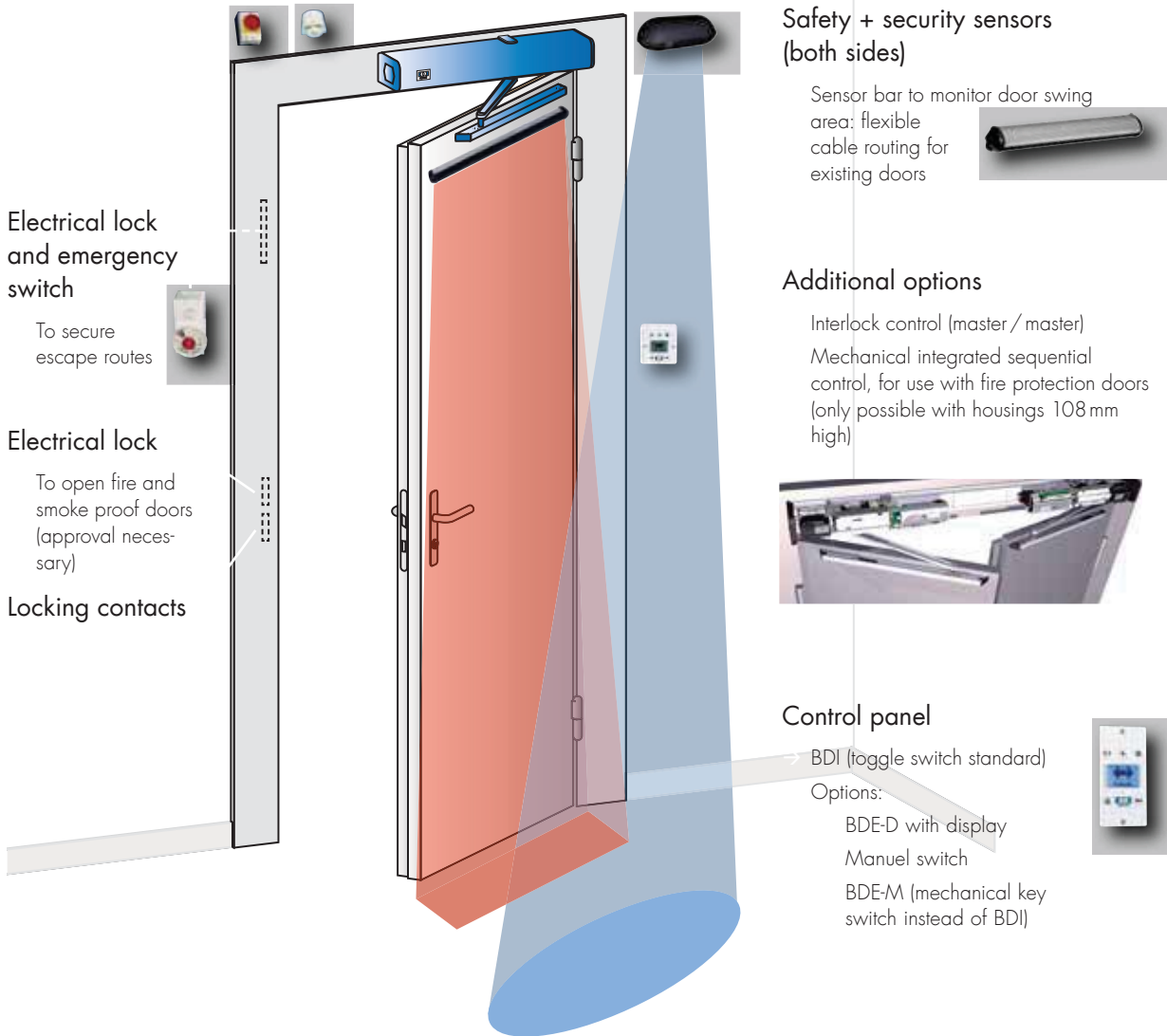
- Radar motion detector RAD 290
- Active and passive infrared sensors
- Hygienic sensor
- Push button

- Presence detector
- Pull switch
- Remote controller
- Key operated contact



### Smoke and fire detector

Main switch

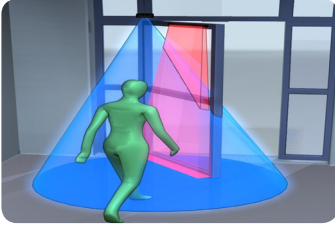


# HR50-Uni



## Activation

### HR50-Uni



### Save Energy with this Flexible Directional Sensitive Microwave Door Activation Sensor

Robust and stylish swing and sliding door activation sensor suitable for mounting heights of up to 4m



- Swing door activation  
Advanced technology allows mounting of the HR50-Uni on the swing side of a swing door without detecting door movement

- Reduced Building Energy Loss  
Maximize energy conservation by reducing door-open time through unidirectional detection

- Versatile  
Highly flexible antenna allows mounting above the door or from the ceiling. Interchangeable wide or narrow antenna ensures the desired detection area can be achieved for every installation

- Attractive Design  
Small and neat so this sensor will enhance and complement all door types



## HR50-Uni Activation



## Technical Specification

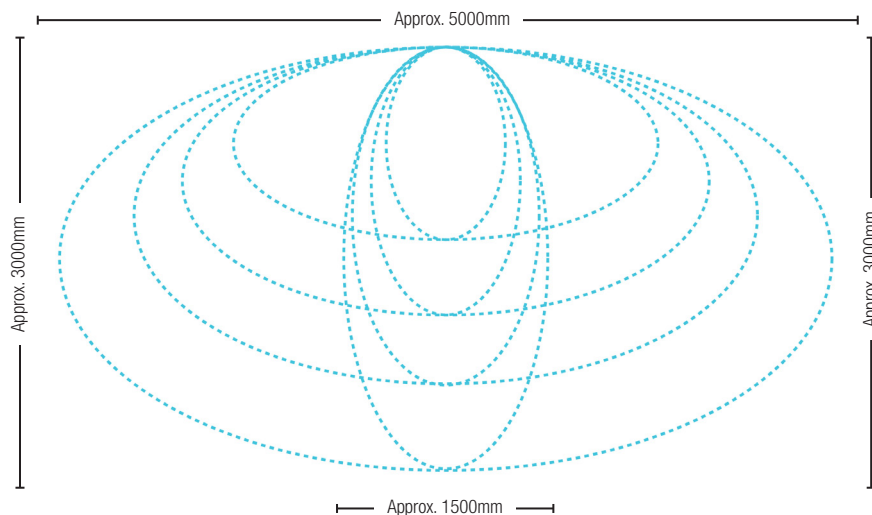
### Accessories



WC\_HR50  
Weather cover for  
the HR50 sensor

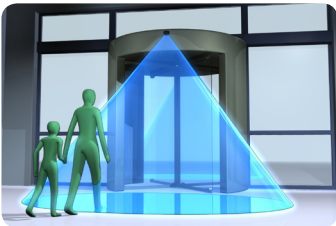
Model	HR50-Uni Pedestrian Door Activation	
Detection Method	K-Band 24.125Ghz - Microwave Motion Detection	
Installation Height	Max 4000mm (13.1ft)	
Sensor Dimensions	120mm (W), 70mm (H), 41.5mm (D)	
Pattern Adjustment	Width Adjustment: Antenna Adjustment left/right 0°- 30° in each Width Adjustment: Turn Antenna to change detection pattern from wide Width Adjustment: Sensitivity Adjustment (Potentiometer) Depth Adjustment: Antenna Adjustment up/down 0°- 90° Depth Adjustment: Sensitivity Adjustment (Potentiometer)	
IP Rating	54	
Power Supply	12 to 30V DC, 12 to 24V AC	
Current Consumption	40mA (DC24V)	
Power	< 1.4W	
Transmitting Power	16 dBm	
Output	PhotoMOS (On resistance Max. 35Ω)	
Relay Hold Time	1.2sec	
Max. Switching Power	125V AC 0.1A	
Max. Switching Voltage	125V	
Max. Switching Current	0.24A (100ms)	
Min. Detection Speed	0.3 m/s	
LED Indication	Power On	= Green
	Detecting	= Red
	Initialization after power on	= Green/Red Flashing
Operating Temperature	-30°C to +55°C, (-22°F to 131°F)	
Weight	90g + 160g (box)	
Available Colours	Black: Product Code	= HR50-Uni
Accessories Provided	Connection Cable Mounting Template Mounting Screws	

### Detection Area at 2.2m Installation Height



# HR50

## Activation



### Bi-Directional Microwave Door Activation

User friendly overhead microwave sensor suitable for a variety of door types at mounting heights of up to 4m

- Large Detection Area

Detection area of up to 4m wide x 2m deep<sup>1</sup> ensures timely door activation when doors are approached by fast moving traffic  
<sup>1</sup> Installation height of 2.2m

- Simple to Install

Easy installation to suit all environments through detection area adjustment and sensitivity potentiometer

- Attractive Design

Small and neat so this sensor will enhance and complement all door types

- Economical

Cost effective pricing to suit all market needs

HR50  
Activation



## Technical Specification

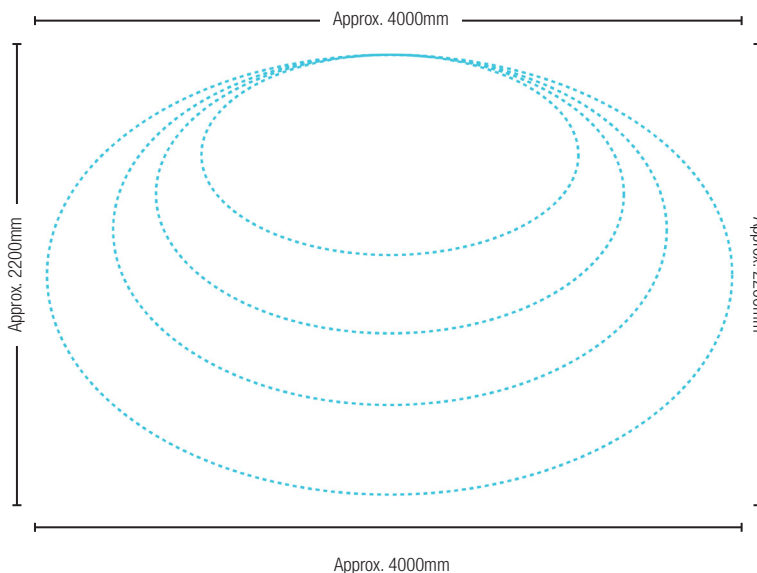
### Accessories



WC\_HR50  
Weather cover for the  
HR50 sensor

Model	HR50 Pedestrian Door Activation	
Detection Method	K-Band 24.125Ghz - Microwave Motion Detection	
Installation Height	Max 4000mm (13.1ft)	
Sensor Dimensions	120mm (W), 70mm (H), 41.5mm (D)	
Pattern Adjustment	Width Adjustment: Antenna Adjustment left/right 0°- 30° in each direction)	
	Width Adjustment: Sensitivity Adjustment (Potentiometer)	
	Depth Adjustment: Antenna adjustment up/down 0°- 90° in 6° steps	
	Depth Adjustment: Sensitivity Adjustment (Potentiometer)	
IP Rating	54	
Power Supply	12 to 30V DC, 12 to 24V AC	
Current Consumption	40mA (DC24V)	
Power	< 1.4W	
Transmitting Power	16 dBm	
Relay Output	1C Type Relay (One Switching Contact)	
Relay Hold Time	1.2sec	
Max. Switching Power	125V AC 0.5A, 24V DC 1A	
Max. Switching Voltage	125V AC / 60V DC	
Max. Switching Current	1A	
Min. Detection Speed	0.3 m/s	
LED Indication	Power On	= Green
	Detecting	= Red
	Initialization after power on	= Green/Red Flashing
Operating Temperature	-30°C to +55°C, (-22°F to 131°F)	
Weight	91g + 160g(box)	
Available Colours	Black: Product Code	= HR50
Accessories Provided	Connection Cable	
	Mounting Template	
	Mounting Screws	

### Detection Area at 2.2m Installation Height





# BLS 60

## Touchless switch BLS 60 reduces the spread of germs



### Hygienic and user-friendly

Bacteria and viruses are mostly passed on via the hands. A door handle that turns into a germ spreader is a problem for companies, especially in the hygiene sector. The unpleasant bacteria adhere to many everyday things such as smartphones, shopping trolleys, light switches or door handles.

Non-contact buttons are the ideal solution for hospitals, medical practices, restaurants and food processing industry. Simply approach the switch and the automatic door opens when your hands are busy with carrying objects or typing a message on your smartphone.

In addition to operating the door easily, the record BLS 60 guarantees hygienic handling, as there is never any contact between skin and object. The sensor is hidden behind the dark 60 x 60mm front panel. Its activation is indicated by a red LED.

### Applications

- More stringent hygienic requirements for opening doors in hospitals; e.g. operating theatres, laboratories, patient rooms.
- Gesture control of automatic doors in residential and nursing facilities, also for persons with limited mobility.
- Automatic doors in sanitary areas to reduce the spreading of germs and dangerous pathogens.
- Conscious door opening for service personnel between the guest zone and the kitchen in restaurants or for employees in the food processing industry.

### Features

- Scanning range adjustable between 15 and 80cm
- Floating relay changeover contact to control door drives
- Interchangeable front panel with application-related pictograms



The BLS 60-REL can easily and quickly be installed in surface- or flush-mounted versions of commonly used switch systems. The switch is ready for operation as soon as you have connected

## Technical Data

Scanning distance (with white paper):	15..80cm
Glass panel dimension:	60 x 60mm can be installed in Feller or Jung systems
Supply voltage:	10...30 VDC
Power consumption:	0.3 W
Relay output, contact rating: Function indicator when active: Protection rating	max. 1 A (30 VDC) red LED
(DIN EN 60529): Temperature range:	IP 54
Humidity range:	-20...+55 °C up to 85% rel., non-condensing

## Versions

Touchless switch BLS 60-REL

Opto-electronic proximity switch with relay actuation

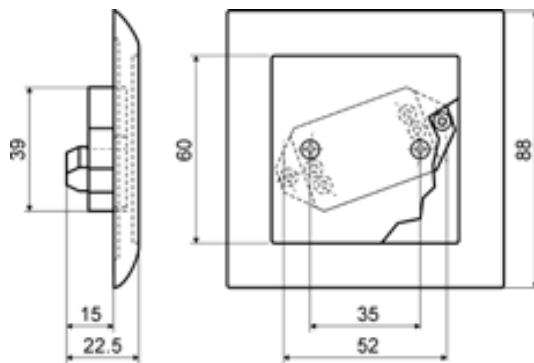
Operation: touchless

Button size: Standard electrical size 88x88mm Supply

voltage : 10 - 30 VDC

Range: 15 - 80cm

Glass panel «Hand»



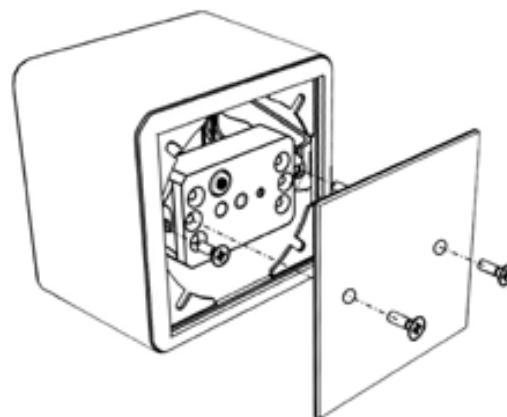
Dimensions

Installation variants

Alternatively surface mounting or flush mounting possible



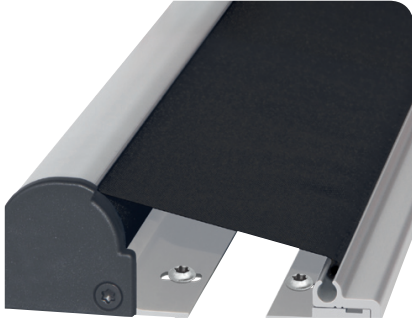
Flush mounting



Surface mounting

# Finger Trap

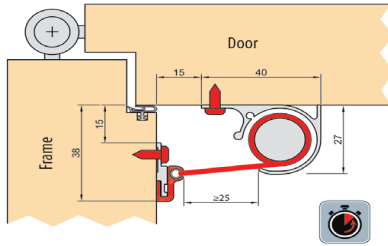
## FP60 Swing Door Finger Guard



Simple installation/removal system

Protect little fingers from getting crushed in closing swing doors

Available in 1,925mm and 2,015mm lengths for full compliance to EN16005



Door closed roller curtain retracted

- **Finger Safety**

Specially designed roller type blind ensures constant tension as the door moves, preventing fingers from inadvertently getting crushed in closing swing doors.

- **Mount and Adjust in Minutes**

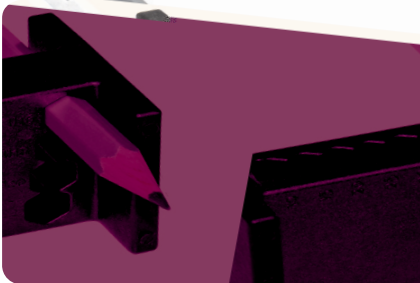
Oblong mounting holes along with an easily removable/mountable fabric cover facilitates mounting to the door and frame in a matter of minutes.

- **Stylish and Easy to Maintain**

Available in silver, black and white, installs without any screw heads visible. Our removable/mountable fabric cover allows for easy door maintenance and FP60 fabric cleaning.

- **Durable and Fire Resistant**

Durability tested up to 1,000,000 test cycles and B1 rated fire resistant.



Door marking aid accessory available

# Pure Products

## UK Distribution



Opening the door to a cleaner world

### Product Range – UK Distribution

Our recent expanded range now comprises of 4 unique door handle products. Each product features the latest in hygiene technology and offers significant after-sales opportunities through the associated consumables, life cycle replacements and customer service support. This results in long term, repeatable sales growth for distributors.

#### Pure PRO – Gel Dispensing Door Handle

Releases sanitising gel onto the user's hand as they pull open the door. Perfect for use in high risk areas where it's important to get users to sanitise their hands.

Repeat sale – YES. Customers purchase the bespoke Pure Pro sanitising gel refills. Each bottle lasts around 2,000 pulls. In addition, distributors can sell service/maintenance contracts.

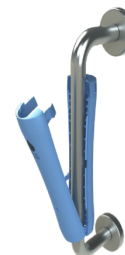
#### Pure PULL – Antibacterial Door Handle 'Cover'

An antibacterial door handle cover that kills 99.9% of bacteria using silver ion technology to ensure the handle is clean to touch. Simple to fit and remove from most cylindrical pull door handles without any tools.

Repeat sale – YES. Units must be replaced every 6 months (i.e. when front indicator turns red) Colours – metallic ice blue / metallic black / Other colours available (subject to bulk order)  
(bulk order discounts available)

#### Pure PUSH – Antibacterial Door Push Plate

An antibacterial door push plate that kills 99.9% of bacteria using silver ion technology to ensure the plate is clean to touch. Simple to fit and remove without any tools.  
(bulk order discounts available)



**Don't compromise on door hygiene – protect your employees and visitors**